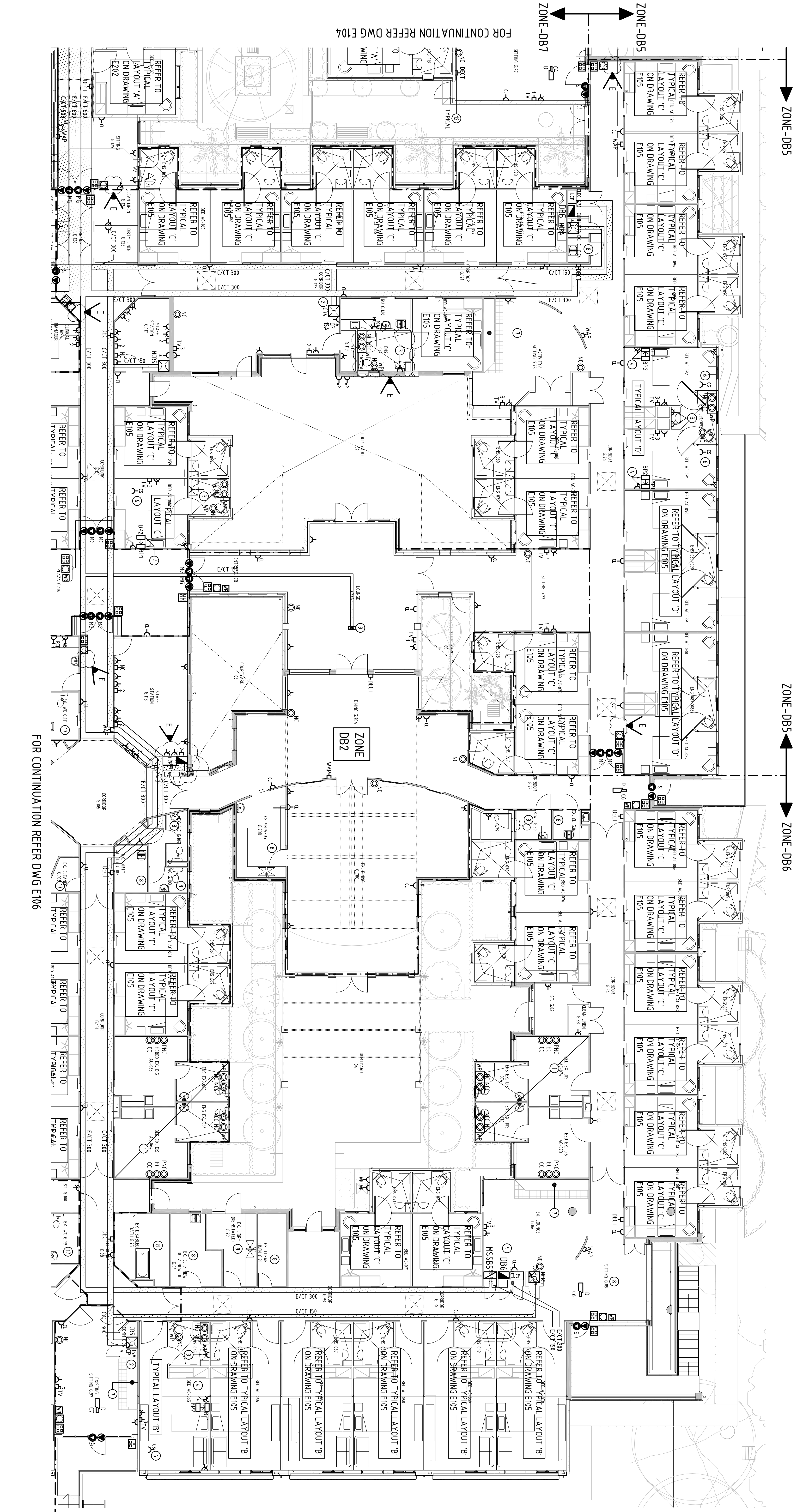


GENERAL NOTES

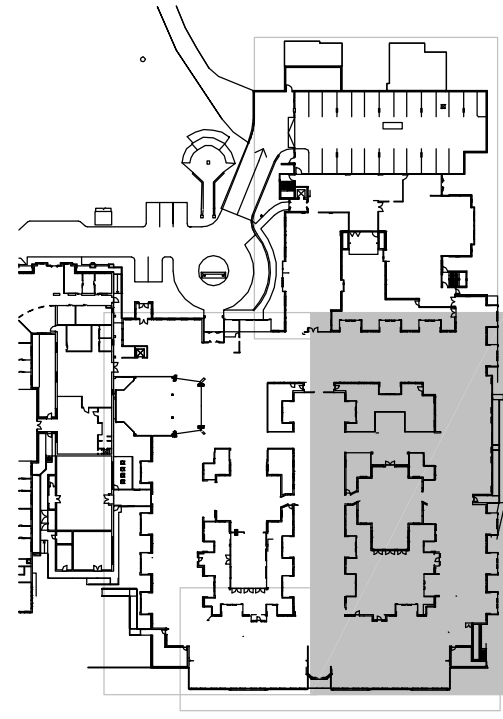
1. REFER TO DRAWING E04 FOR APPLICABLE NOTES AND ABBREVIATIONS.
2. FOR THE EXISTING FACILITY STAGES 2 AND 3, ALLOW IN THE TENDER AN ADDITIONAL 12-0FF DOUBLE SWITCHED SOCKET OUTLETS AND 12-0FF DATA OUTLETS INCLUDING WIRING AND CONNECTIONS FOR SPECIALIST SERVICES AND FACILITIES I.E. NURSE CALL, PAGING AND AUDIO VISUAL SYSTEMS.
3. TENDERS SHALL VISIT THE SITE TO OBTAIN THE SCOP FOR REPAIRING AND RECONNECTING EXISTING ELECTRICAL SERVICES IN EXISTING ROOMS AND ASSOCIATED WORKS AND COSTS IN THE TENDER.

POWER LAYOUT REFERENCE NOTES

1. EXISTING ELECTRICAL SERVICES TO REMAIN. PROVIDE AND CONNECT NEW NURSE CALL POINTS AS SHOWN.
2. REFER TO SCHEMATIC IN DRAWING E05 AND SPECIFICATION FOR THE FITOUT AND TERMINATION OF THE COMB BACK. PROVIDE A 55A, 250V SINGLE CAPTIVE TYPE SWITCHED SOCKET OUTLET SUB-PATE WALL MOUNTED ADJACENT TO THE BACK.
3. PROVIDE DOUBLE SWITCHED SOCKET OUTLET INSTALLED IN CORRIDOR.
4. BED SIDE SERVICES PANEL BPT WITH PANEL BPT BELOW. REFER TO PANEL DE LALS ON DRAWING E201.
5. RECONNECT THE EXISTING LIGHTING AND POWER SUB-CIRCUITS TO THE P ANT ROOM AND GARAGE BELOW GROUND LEVEL TO DISTRIBUTION BOARD DB6. PROVIDE AND CONNECT 4-0FF 20A, 3 POLE MCB'S AND 4-0FF 1 POLE RCB'S IN DB6. PROVIDE AND CONNECT ADDITIONAL SUB-CIRCUITS AS REQUIRED.
6. GO IN CEILING SPACE FOR AIR CONDITIONING IN DOOR UNIT. FINAL LOCATION OF OUTLET TO BE CO-ORDINATED WITH THE MECHANICAL SERVICES CONTRACTOR TO CONNECT TO POWER SUBCIRCUIT FOR BEDROOM.
7. EXISTING GPO'S SHALL BE REPLACED WITH NEW GPO'S IN THEIR PRESENT POSITIONS AND CONNECTED USING NEW WIRING TO THE RESPECTIVE NEW DISTRIBUTION BOARDS.
8. EXISTING GPO'S, POWER CONNECTIONS, VOICE/DATA OUTLETS AND NURSE CALL POINTS SHALL BE REPLACED WITH NEW GPO'S IN THEIR PRESENT POSITIONS AND RECONNECTED USING NEW WIRING TO THE RESPECTIVE NEW DISTRIBUTION BOARDS AND COMMS RACKS. WHERE APPLICABLE DISCONNECT AND REMOVE THE EXISTING CEILING MOUNTED EXHAUST FANS IN THESE ROOMS.
9. PENETRATION IN ROOF ABOVE FOR SUBMITAN CABLES TO MECHANICAL SERVICES SWITCH BOARD MSB3) AND HYDRAULICS CONTROL PANEL WPT3 ON ROOF. ALSO SUPPLIED FROM DB6. PANELS AND FINAL CONNECTIONS BY OTHER APPROPRIABLE SERVICES CONTRACTORS.



KEY PLAN



Rev	Description	Checked	Date
A	RENDER ISSUE	JVG	18.11.11
B	RENDER ISSUE	JVG	18.11.11
C	RENDER ISSUE	JVG	21.11.11
D	RENDER ISSUE	JVG	21.11.11
E	RENDER ISSUE	JVG	21.11.11
F	RENDER ISSUE	JVG	21.11.11

13/313	X00-A1ED
13/313	X00-A1ED

**Waterman**

Waterman **Adv** Pty Ltd  
100 Park Street, South Melbourne, Victoria 3205 Australia  
t: (03) 9585 5900 f: (03) 9585 5999 [waterman@waterman.com.au](mailto:waterman@waterman.com.au)

**ASSISI CENTRE**  
EXISTING AGED CARE BUILDING &  
NEW RETIREMENT ACCOMMODATION  
230 ROSAMMA RD, ROSAMMA

**ELECTRICAL SERVICES**  
GROUND FLOOR - SHEET 2  
POWER, COMMUNICATIONS  
& ACCESS CONTROLS LAYOUT

Drawn	PLG	Date	AUG 2010
Checked	JV	Scale	1:50 @ B1
Drawing No	<b>E105</b>	Job No	4905
Revised	<b>E</b>		

CONSTRUCTION ISSUE

THESE DRAWINGS HAVE BEEN MARKED  
"CONSTRUCTION ISSUE" ON THE UNDERSITING  
THAT THEY ARE TO BE USED AS THE BASIS FOR  
THE COMMENCEMENT OF THE SUB CONTRACTOR'S  
SHOP DRAWING PROCESS.

